

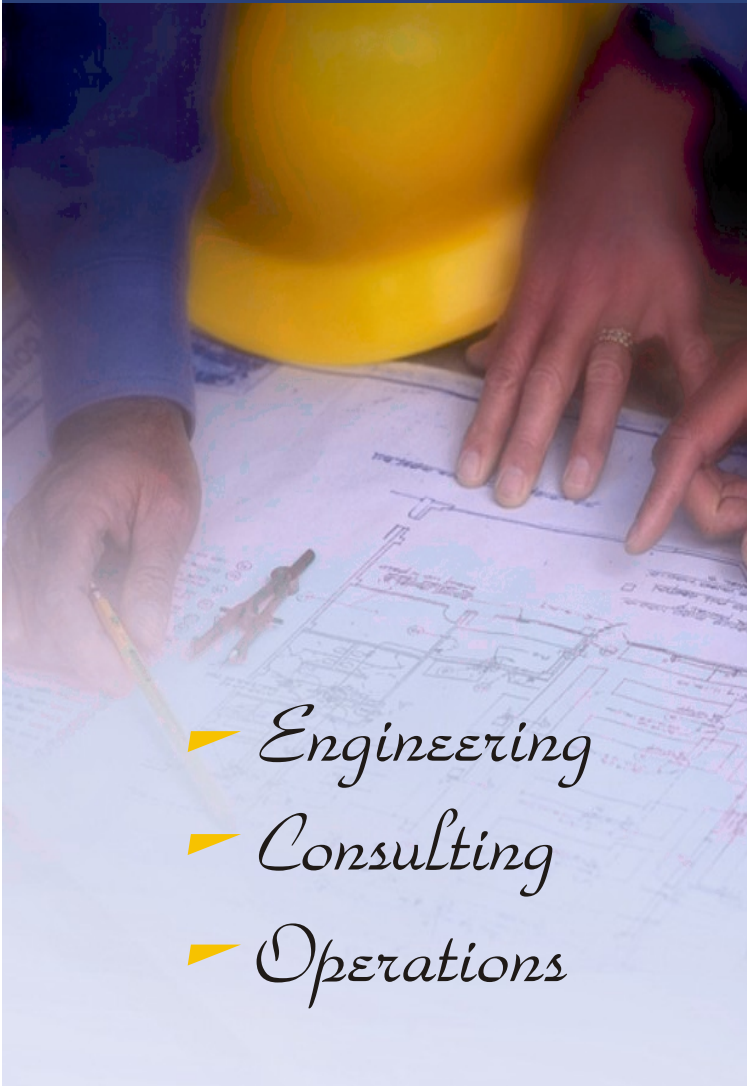
Act 537 Planning Reminder

When completing a municipal or regional Act 537 Sewage Facilities Plan please remember that the plan is a municipal plan and is the responsibility of the municipality. Municipal authorities can take the lead in preparing such plans; however, in a case where the municipal authority prepares the plan, each of the authority's member municipalities must, at a minimum, provide the following:

- Information concerning previous wastewater planning
- A physical and demographic analysis of the municipality
- Information pertaining to existing sewage facilities in the municipality including information on existing on-lot disposal systems and private potable water wells
- An evaluation of planned future growth in the municipality and projected wastewater flows

Each plan must follow the guidelines set forth in the Pennsylvania Department of Environmental Protection's (DEP) "Act 537 Plan Content and Environmental Assessment Checklist," whether it is prepared by the municipality or prepared and assembled by the municipal authority. The final step in the process is for each participating municipality to adopt the plan via a formal resolution.

For more information on how ARRO can assist your municipality in updating its Act 537 Plan, please contact Bill Bohner by telephone at 610-495-2102 or via email at bill.bohner@thearrogroup.com.



- Engineering
- Consulting
- Operations

ARRO

Dynamics

Inside This Issue

Act 537 Planning Reminder

This'n that

This'n that

ARRO Expands GIS Services

www.thearrogroup.com

this'n that

Official Maps

A Community Development Tool not to be discredited

Although Article VI of the Pennsylvania Municipalities Planning Code allows for official maps, few municipalities within the Commonwealth have adopted them. If you are a municipality with an adopted Official Map, you are to be commended for giving your community a strong negotiating tool for use with developers. If you are a municipality without an official map, then please read on.

Before getting into the essence of official maps, it is important to point out that they are not zoning maps. A zoning map depicts a patchwork of land use districts blanketing the entire municipality, whereas an official map locates existing and proposed public lands and facilities identified in the comprehensive plan. Examples of these public features may include streets, parks, playgrounds, open space, trails, railroad and transit rights-of-way, flood control, stormwater management, and sanitary sewer facilities.

Although different in purpose, official maps do enjoy land use powers similar to those of a zoning ordinance when it comes to managing the development or redevelopment of a community. The most notable official map power affords a municipality twelve months in which to decide whether or not to acquire a property, or portion thereof, shown on the official map as being reserved for future taking or acquisition for public use. The municipality's decision must come within twelve months from the property owner's written notice announcing his or her intention to build, subdivide, or otherwise develop reserved land identified on the official map.

Within the twelve-month period, the municipality can explore several options for acquisition, including raising money through grant programs and condemnation proceedings. Should neither the municipality nor the

property owner wish to wait the full year, negotiations can begin to establish a mutually beneficial solution achieving both

public and private objectives while saving time and perhaps money.

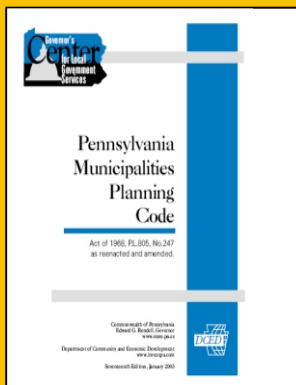
For more information on how ARRO can assist your municipality reap the benefits of an official map or to discuss possible grant funding opportunities, please contact Eugene C. Briggs by telephone at 610-495-2114 or via email at eugene.briggs@thearrogroup.com.

Habitat Evaluation for Endangered Species

ARRO recently performed an eastern spadefoot toad habitat evaluation as part of a land development project in northeastern Pennsylvania. This is a new evaluation for a newly classified endangered species. A project environmental review was performed using the Pennsylvania National Diversity Inventory (PNDI) online database and a PNDI conflict was encountered within the vicinity of the project. The PNDI conflict included potential impacts to eastern spadefoot toads which are under the jurisdiction of the Pennsylvania Fish and Boat Commission (PFBC). The eastern spadefoot toad, an elusive toad species, has recently been added to the state's endangered species list. The eastern spadefoot toad breeds in temporary pools when the proper environmental conditions exist. Because eastern spadefoot toads may not breed for intervals up to six years if proper environmental conditions do not exist, habitat evaluations should consider past land uses over a period of no less than six years.



ARRO performed field reconnaissance activities within the project area to evaluate the habitat's suitability to support the toad's existence. As part of this evaluation, geology, site soils, surface drainage, wetlands, and foliage were evaluated to determine if suitable conditions were present for the toad. Upon completion of the evaluation findings were reported to PFBC stating that suitable conditions were not present for the toad. The land development will proceed and environmental concerns will be addressed to lessen detrimental effects to the ecosystem in an effort to support the toad's habitat.



For questions or comments, please contact us at info@thearrogroup.com.

this'n that

How to reduce junk mail?

The first step in cutting back on the flow of junk mail is to register for the Direct Marketing Association's "Do Not Mail" list. Send a letter or postcard with your name, home address, and signature to:

Mail Preference Service
Direct Marketing Association
P. O. Box 643
Carmel, NY 10512

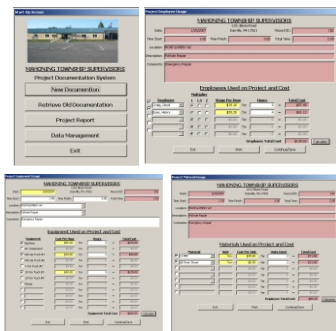
In addition, the California Integrated Waste Management Board offers these suggestions:

- If junk mail is marked "address correction requested" or "return postage guaranteed," write "refused - return to sender" on the envelope and mail it back.
- Call the 800 number listed on unwanted catalogs and asked to be removed from the mailing list.
- Call the customer service department of specific organizations and businesses and ask to be removed from their mailing list, or send a signed, written request that includes a copy of the mailing label.

Road Maintenance Tool

The ARRO Geographic Information System (GIS)

Department has recently created a Microsoft Access tool for tracking road maintenance. The application tracks equipment, employees, and material usage for a given road segment(s). The system minimizes the time required to produce reports summarizing the work conducted during specified periods, or in answering questions such as the amount of salt applied in the past month. The resultant databases also link to GIS maps for visual representation.



For more information about this application or to schedule a demonstration, please contact Brian Higgins, GIS Manager at (610) 495-2106 or brian.higgins@thearrogroup.com.

A Planetary Quiz

1. Mercury
2. Venus
3. Earth
4. Mars
5. Jupiter
6. Saturn
7. Uranus
8. Neptune
9. Pluto

- A) This is the largest planet.
- B) The only planet with plants.
- C) The winds on these planets are believed to blow as fast as 1,200 miles per hour.
- D) This planet was named after the ancient mythological god of the sky Ouranos.
- E) This planet was recently classified as a "dwarf planet" by the International Astronomical Union.
- F) This planet is home to the largest volcano in the solar system.
- G) This is the least dense planet - it could float on water.
- H) This is the planet closest to Earth.
- I) One half of this planet is boiling hot; the other half is freezing cold.

The first person to e-mail the correct answers to info@thearrogroup.com will win a prize. The correct answers to the last Issue's "Oscar Quiz" are 1B, 2A, 3I, 4G, 5H, 6F, 7C, 8E, 9J, 10D.

Clean Up Your Language

Most career consultants agree that what you say makes a strong impression on those around you. "People sometimes get too comfortable and say what comes to mind rather than thinking about how to present themselves," says Judy Chudars, president of CityStaff, a staffing firm. "Using a worn-out phrase is not creative or innovative."

For this reason, it's best to avoid out-dated jargon and expressions such as:

- ✓ Thinking outside the box.
- ✓ It's like herding cats.
- ✓ Good to go.
- ✓ Mission accomplished.
- ✓ Picking your brain.



Notable Quote: "Start by doing what is necessary, then what's possible, and suddenly you're doing the impossible."

St. Francis of Assisi

ARRO Consulting, Inc./ARRO Environmental Services, Inc.
 270 Granite Run Drive
 Lancaster, PA 17601-6804
www.thearrogroup.com

ARRO provides advice, design, project management, consulting, and operations services for a wide range of infrastructure including water, wastewater, and transportation systems.

ARRO OFFICES

Pennsylvania

- 270 Granite Run Drive
Lancaster, PA 17601
(717) 569-7021
- 649 North Lewis Road
Suite 100
Limerick, PA 19468
(610) 495-0303
- 400 Washington Street
Suite 602
Reading, PA 19601
(610) 374-5285
- 4750 Delbrook Road
Suite 101
Mechanicsburg, PA 17050
(717) 975-3995
- 1150 Glenlivet Drive
Suite A19
Allentown, PA 18106
(484) 664-7310
- Lipkin Technology Building
One South Second Street
Pottsville, PA 17901
(570) 622-2973
- 9 North Third Street
Oxford, PA 19363
(610) 932-9091

Maryland

- Hub Plaza
1101 Opal Court
Third Floor
Hagerstown, MD 21740
(301) 791-1100

ARRO Expands GIS Services

The ARRO Geographic Information System (GIS) Department successfully redesigned and deployed an enhanced website for Lower Pottsgrove Township www.lowerpottsgrove.org in December 2006. The Township desired a low-cost, high quality solution to its website needs. The website requirements and subsequent improvements included:

- Consistent and clean look
- Intuitive hyperlink navigation
- Custom images and graphics
- Organized file management structure
- Downloadable/printable permit applications as a PDF (portable document format) file
- Calendar of meetings and events
- Links to external sites

As part of its services, ARRO provided Microsoft FrontPage

training to Township employees, thus helping them to become self-sufficient and alleviating the need for a long-term maintenance contract.

For more information regarding how ARRO can increase your municipality's Internet visibility while enhancing customer friendly access, please contact Brian Higgins, GIS manager by telephone at (610) 495-2106 or via email at brian.higgins@thearrogroup.com.

